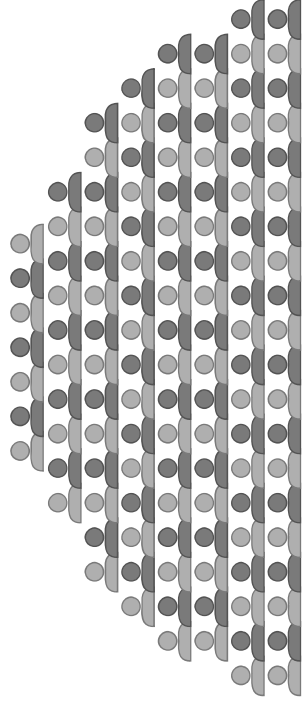
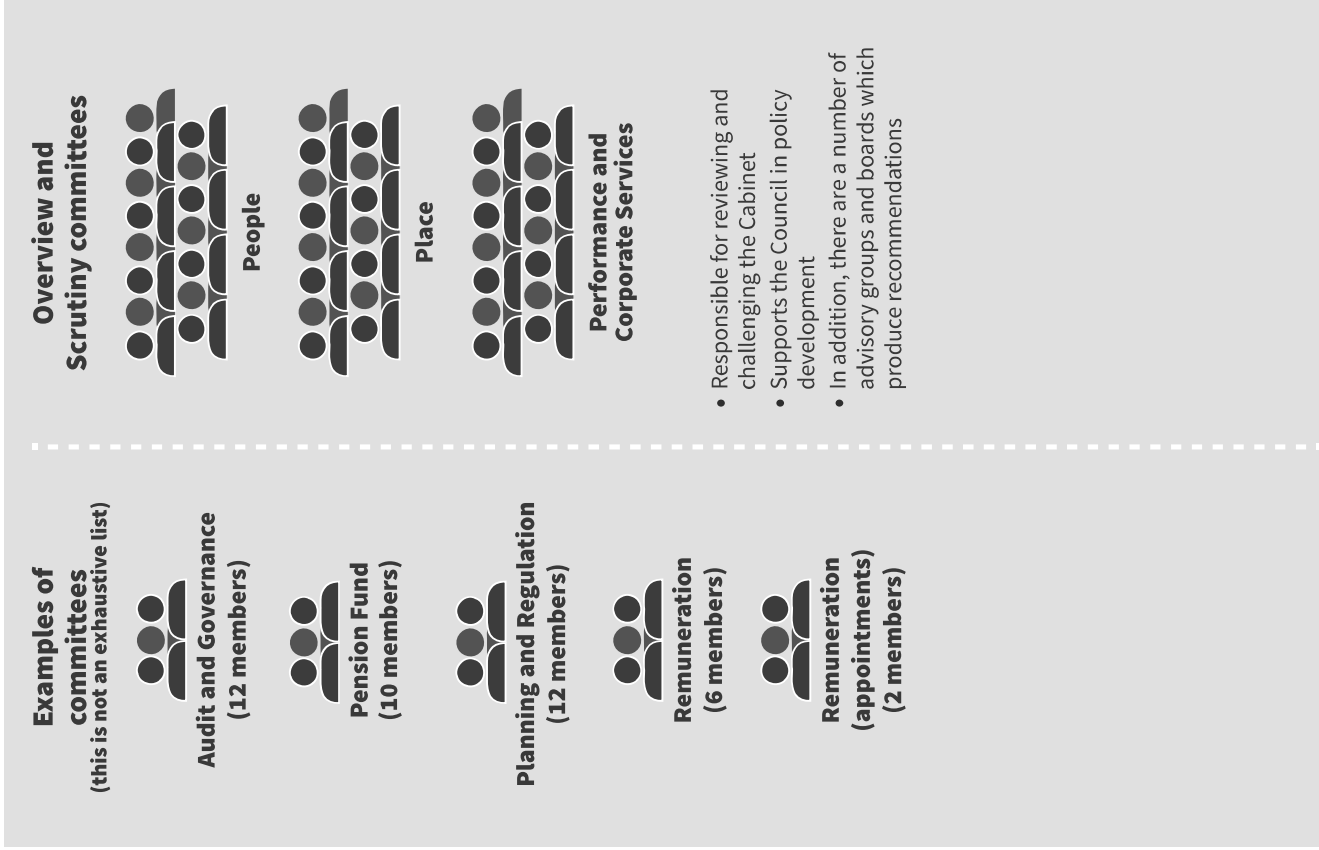


## ANNEX 2 – DIAGRAM

# Oxfordshire County Council governance model

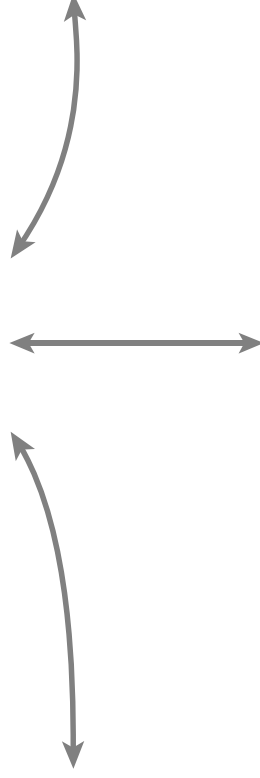


## Full Council

63 Councillors representing a number of different political groups



Councillor briefing



## Leader and Cabinet



- Leader elected by the Council
- Leader chooses Cabinet Members
- Each Cabinet Member has a designated portfolio of responsibilities
- Delegation to individual portfolio holders enables decision making without having to report to Cabinet - subject to limitations and a duty to take advice

